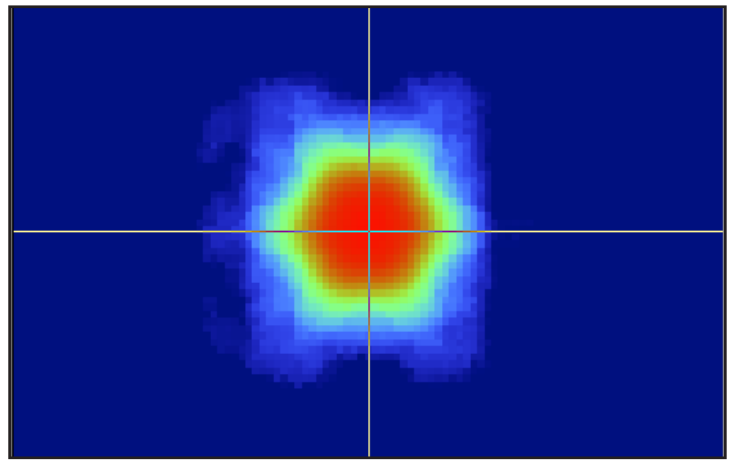
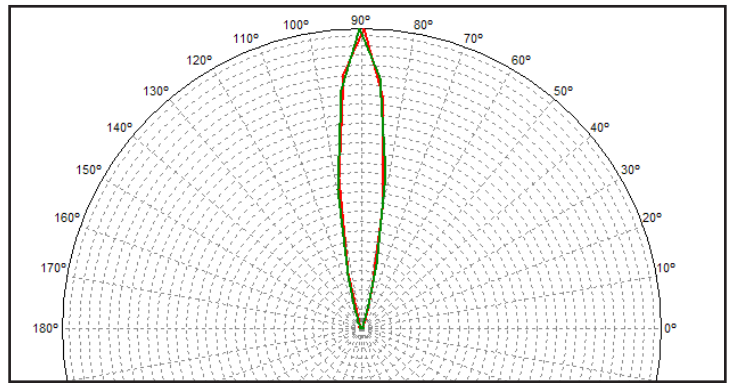


PL1758ME - NEMA 3



- Material = PMMA HT121 - (TT70 On Request)
- Full angle at 50% from maximum: ~ 18°
- Full angle at 10% from maximum: ~ 35°
- The light spots here represented refer to tests carried out with LEDs with 3mm dome, ~350mA@LED
- The use of lenses with LEDs driven at 350mA and at a distance from less than 3 meters is recommended.

