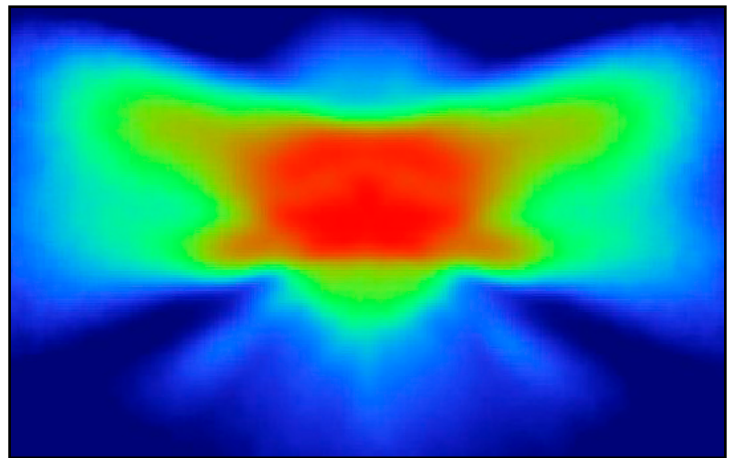
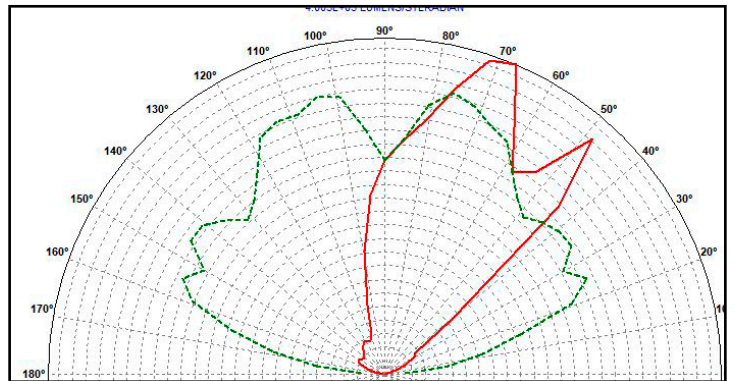


## PLL120006 - IESNA Type III



- Material = PMMA Clear, **Non-yellowing, 10-year guarantee\*\***
- Full angle at 50% from maximum: ~ 150°x58°
- Full angle at 10% from maximum: ~ 160°x135°
- The light spots here represented refer to tests carried out with LEDs with 3mm DOM and 2mm<sup>2</sup> LES, ~260lm@LED

**Notes:**

- Dimensions in inches into brackets
- For missing dimensions see 3D file
- WHITE surfaces: mirror polished
- GREY surfaces: embossed 25/27 VDI
- RED surfaces: gate areas. Sink mark Injection will be present
- Ⓢ Quality Control Dimensions (QCD)
- Planarity tolerance +/- 0.80 mm

**\*\* Project and design owned by Khatod OPTOELECTRONIC s. r. l. \*\***  
 The technical solutions adopted in this design are Khatod intellectual property, they cannot be reproduced and transmitted to third parties without our prior written permission. Unauthorized disclosure of confidential proprietary information will be prosecuted by law.

DESCRIPTION : 12 Array lens		DESIGNER : DP/KR/LM	PROJECT : VI_II
CODE : PLL 120006	CHECKED : DP/LM	CONTROLLED : DP	DATE : 04/04/2017
<b>KHATOD</b> Via Alessandro, 25 Cusano Milanese MILANO ITALIA WWW.KHATOD.COM		All dimensions in mm General Tolerances +/- 0.25 mm	DRAW TOLERANCE: No One SCALE : 1 : 1 SHEET : 1 of 1